

The beamertheme-cuerna beamer theme*

Geri Ochoa
geri@bluesimplex.com

September 24, 2016

1 Introduction

This package contains a theme for *Beamer*, the theme itself must be referenced as *Cuerna* inside beamer and has four basic colour themes. It requires no additional customization but to set the theme and colour theme with the usual syntax.

2 Usage

A very basic example is presented below, it comprises the title page and a single slide.

```
\documentclass{beamer}
\usepackage[utf8]{inputenc}
\usepackage[T1]{fontenc}

\usetheme{Cuerna}

\usecolortheme{default}

\logo{\includegraphics[width=1.7cm]{pictures/bluesimplex.png}}

\title{A rather long title without specific meaning}

\author{Geri Ochoa\
  \texttt{geri@bluesimplex.com}}

\date{Important Congress 2016}

\institute{Institute of Mathematics, Great University}

\begin{document}
```

*This document corresponds to beamertheme-cuerna v1.1, date 2016/09/18.

```

\begin{frame}

  \titlepage

\end{frame}

\section{Introduction}
\begin{frame}
  \frametitle{Title of the slide}
  \framesubtitle{Subtitle}
  Some text on top of this slide

  \[
    \int_0^{\infty} \frac{5x^2}{\sqrt{a+b}} \, dx
  \]

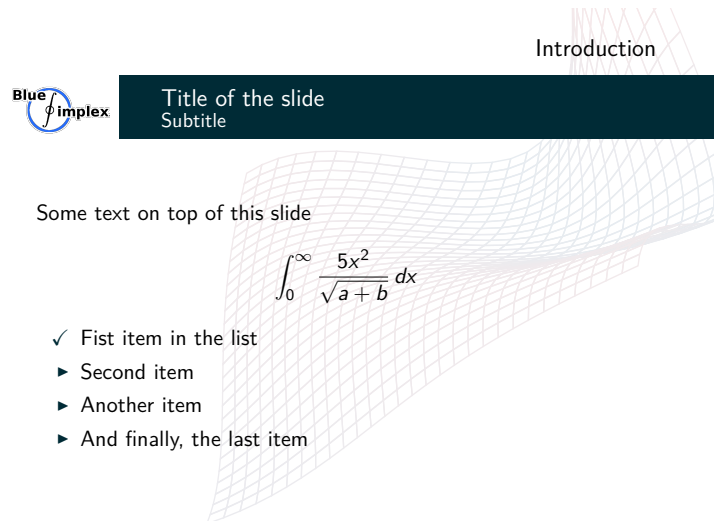
  \begin{itemize}
    \item[\checkmark] First item in the list
    \item Second item
    \item Another item
    \item And finally, the last item
  \end{itemize}
\end{frame}

\end{document}

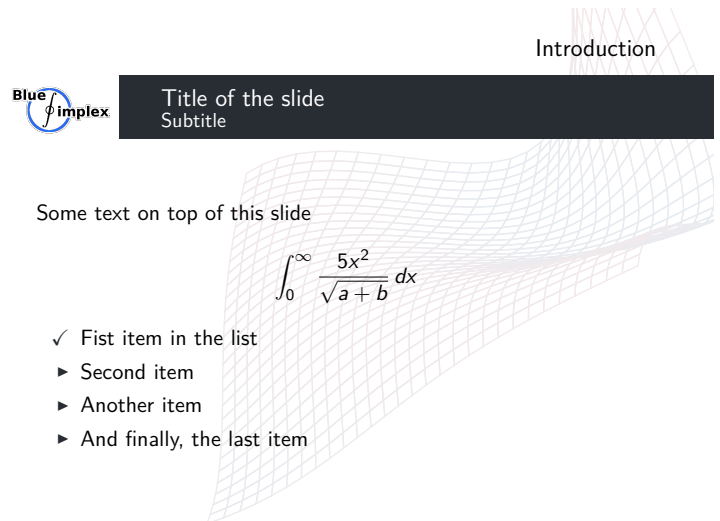
```

The output depends on the parameter passed to the `\usecolortheme` command. There are four of them shipped with this package:

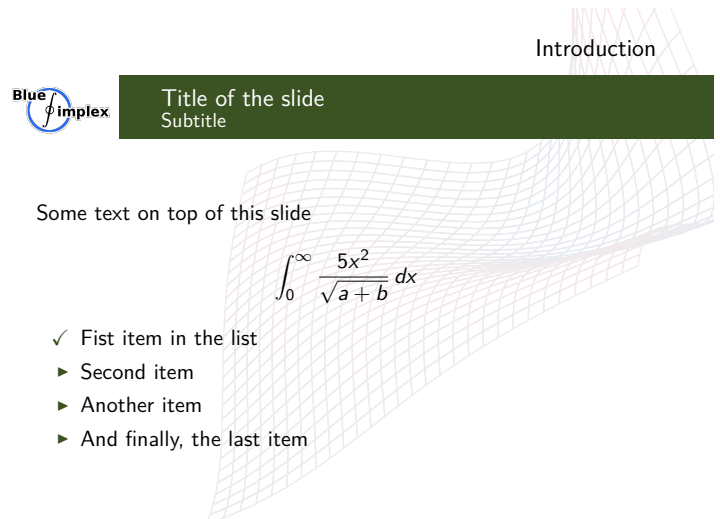
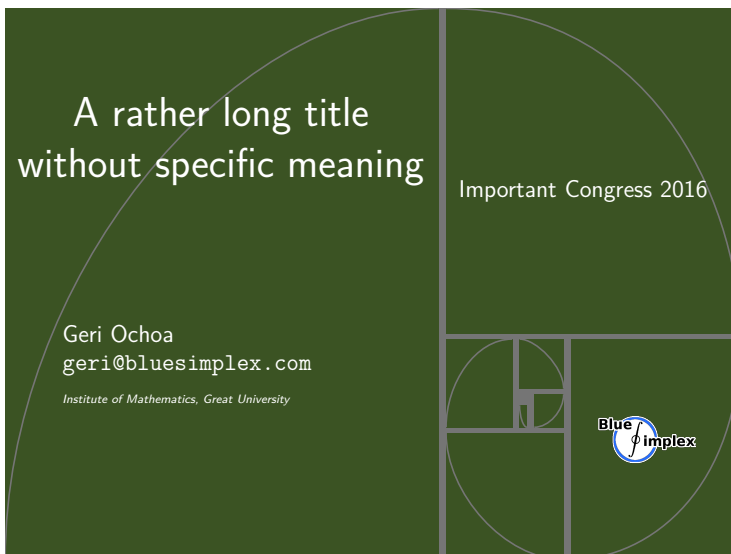
2.1 default



2.2 bluesimplex



2.3 lettuce



2.4 brick

